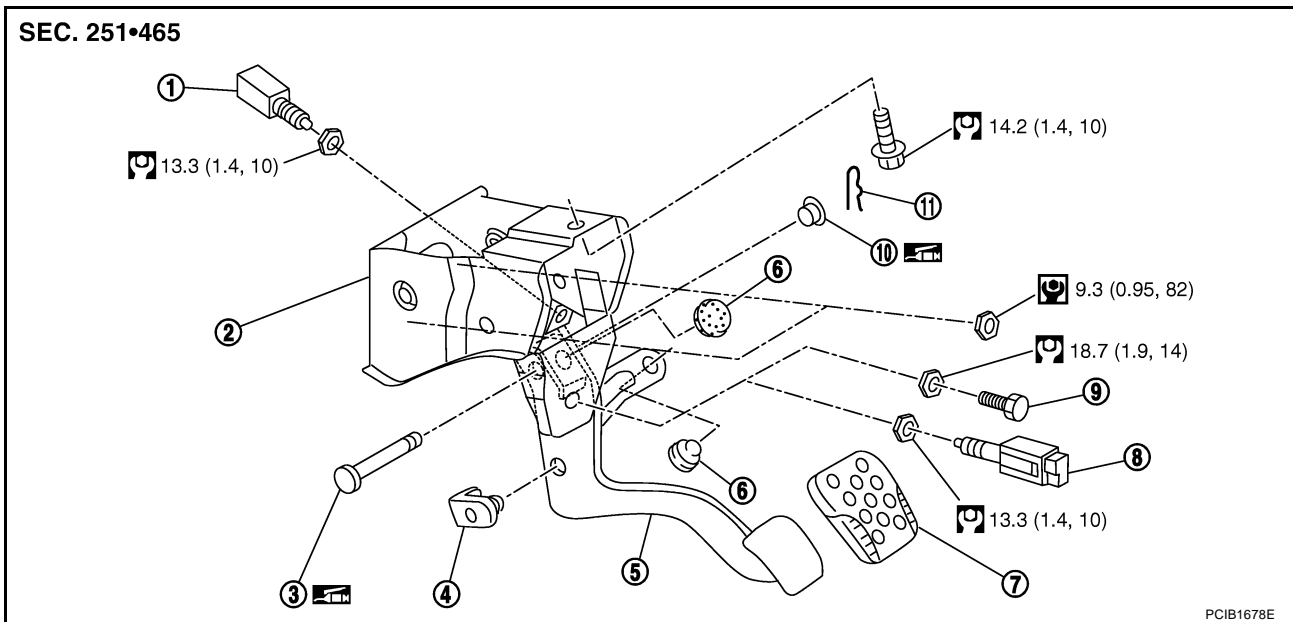


# CLUTCH PEDAL


NCS00007

## Removal and Installation COMPONENTS



- |                            |                                   |                                      |
|----------------------------|-----------------------------------|--------------------------------------|
| 1. Clutch interlock switch | 2. Bracket                        | 3. Clevis pin                        |
| 4. Pedal stopper rubber    | 5. Clutch pedal                   | 6. Stopper rubber                    |
| 7. Pedal pad               | 8. ASCD clutch switch (With ASCD) | 9. Pedal stopper bolt (Without ASCD) |
| 10. Bushing                | 11. Snap pin                      |                                      |

Refer to [GI-11, "Components"](#) , and the followings for the symbols in the figure.

: Apply lithium-based grease including molybdenum disulphide.

## REMOVAL

1. Remove kicking plate. Refer to [EI-35, "Removal and Installation \(for Coupe Models\)"](#) or [EI-37, "Removal and Installation \(for Roadster Models\)"](#) .
2. Remove footrest. Refer to [EI-43, "Removal and Installation"](#) .
3. Remove dash side finisher (LH). Refer to [IP-11, "Removal and Installation"](#) .
4. Remove instrument driver panel lower. Refer to [IP-11, "Removal and Installation"](#) .
5. Remove the clutch interlock switch and ASCD clutch switch (with ASCD) connectors and harness.
6. Remove the snap pin and clevis pin.
7. Remove the pedal bracket mounting bolt and nuts and then remove the clutch pedal assembly.

## INSPECTION AFTER REMOVAL

Check clutch pedal for bend, damage, or a cracked weld. If bend, damage, or a cracked weld is found, replace the clutch pedal assembly.

## INSTALLATION

Note the following, and install in the reverse order of removal.

- Tighten pedal stopper bolt lock nut or ASCD clutch switch lock nut to the specified torque after installing the clutch pedal assembly in the vehicle and adjusting the pedal free play. Refer to [CL-5, "On-Vehicle Inspection and Adjustment"](#) .
- After installing the clutch interlock switch, adjust the switch position. Refer to [CL-5, "On-Vehicle Inspection and Adjustment"](#) .